

ABC/RTI

21 Wingate St. Haverhill, MA 01832

978-373-2859

Handout

Architecture (RE14R01)



This handout is not to be used as a substitute for legal advice; it is a learning aid only. Information contained may be out of date or not relevant to a particular issue. Consult with Attorney's and licensed professionals for updates and verification of anything contained in this handout prior to using this information. Obtain actual copies of the laws and regulations and standards themselves for the most up to date details and facts. All rights reserved. The text in this handout and/or any part thereof may not be reproduced in any manner whatsoever without written permission from the publisher (ABC/RTI) in writing

Architecture Class

When the Pilgrims arrived at Cape Cod and Plymouth they immediately built shelter for themselves and their families. They had no money and very little resources at their disposal. They built simple small houses from trees, twigs and clay, dirt floors and thatched roofs.

Once settled in they built better, more substantial houses.

These houses were merely a copy of the English Houses they had been familiar with. The styles were of the English Jacobean or Post Medieval designs. They were one room deep and only two rooms wide. One room was the Parlor and the other the hall, thus called the hall and parlor house. The hall area would double as a kitchen and both rooms would be used for sleeping. Over time second floors were added. These two story hall and parlor houses were called I-houses and both of these houses are called folk houses. Folk houses soon went from hall and parlor one room deep to two rooms deep called massed houses. These houses had center chimneys in the north and end chimneys in the southern states.

The windows in folk houses were very small due to possible Indian attacks and cold winters. The construction was wood frame post and beam style.

Over the years lean-tos were added to the back of the house to create more living space. Lean-to attachments gave birth to the salt box design. All of the Colonial Folk houses were built either on piled stone or directly on the dirt. Almost all of these houses are not in existence today due to cheap construction, insect and water damage. The folk houses were built very simple and without fancy, although adequate considering the needs of the settlers. Over time the settlers became successful, wealthy and wanted bigger and fancier houses.

The Colonial Garrison houses have a cantilevered second floor which was said to have been built with an overhung second floor in order to better protect the first floor from the weather, also in order to pay less in Real Estate Taxes. Houses at that time paid taxes on the size of the building foot print, not the overall interior square footage.

The Cape Cod house was a popular 1 ½ story house based on a Massed Folk house design. Folk houses were common place from the 1600's to 1700's. The next generation of houses were the larger expensive Georgians, Federals, Greek Revivals and Victorians. The building of these larger houses was made possible due to the availability of Materials transported through the new rail road system. House styles in the 20th century moved from Modern, Contemporary and back to Colonial- a full circle. What comes next we'll have to wait and see.

First Period

Post Medieval 1640-1725

The English Roots

Appearance & Style

One Cell House

Hall & Parlor

Lean-to

Chimney appearance and location.

The House Frame

Post & Beam Construction

Chamfers & Chamfer stops (Lamb's tongues)

Establishing a Date

Second Period

Georgian Revolution 1781-1783

Common in England 1600's

Style grew from Italian Renaissance

Style replaced Post Medieval by 1700

Brought to America by Pattern books.

Adam

Chimneys unpredictable due to heat and interior design.

Less fancy than Georgian. Palladian windows used too.

Occasionally quoins pilasters found in Georgian also found in Federal.

Established by wealthy merchants

Adam Brothers- largest architectural Practice in Britain.

First true architects appeared in America. Charles Bullfinch, Boston

William Jay-Georgia, John McComb- NY, Samuel McIntire, Salem, MA

Early Classical- have fan lights

Following revolution, need for public buildings

Roman Revival system was fashionable.

Concurrent Neo Classical movement in France-America

Principal Ally in revolution.

Architects working with style: William Jay-Georgia, Ben Lothrob-Philadelphia

Most Influential- Thomas Jefferson

Early Washington shaped by Jefferson and Early Classical revival.

Monticello, Poplar Forest houses designed by Jefferson

Jefferson inspired by Italian Architect Palladio (1508-1580)

Greek Revival 1830-1850

Called National Style due to its wide spread popularity.

Popular style in America- England

American called it Greek Revival, Greek War or independence 1821-1830

Style spread through Pattern books, carpenters guides

Also Minard Lafevars book- the Modern Builders Guides, beauties of Modern Architecture.

Became popular Farm Houses until 1930's

Gothic Revival 1840-1870

Began in England 1749, Sir Horace Walpole remodeled his country house in medieval style. Over the years more folks renovated also.

Alexander Jackson Davis wrote book 1837 Rural Residences, first house plan book published in this county. His Friend Andrew Jackson Downing wrote Cottage Residences- The Architecture of Country Houses, promoted his books.

Italianate 1840-1885

Not popular down south due to the Civil War losses and poverty during the Italianate era.

Popularized by Andrew Jackson Downing

Both Italianate and Second Empire houses declined due to the depression financial panic in 1870's

Used all details, quoins, belt courses, fancy

Octagon 1850-1870

Orson S. Fowler – writer, lecturer NY published a book

The Octagon house- a home for all.

4

Second Empire 1855-1885 Imitated latest French Building Fashion

Roof named after French Architect Francois Mansart 1600's
Style used after-during Napoleons III reign
1852-1870 Frances's Second Empire.
Became popular in US & England due to a housing exhibition in Paris
1855.
Used during Grant Administration to build public buildings.
Called Grant Style. It died due to economic depression 1873.

Stick Victorian- Built between Gothic Revival and Queen Anne.

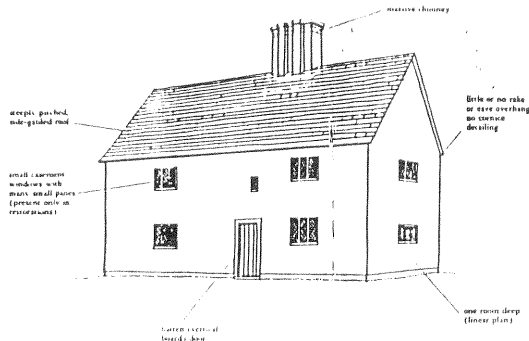
Queen Anne Victorian:

Named after 19th Century English Architects led by Richard Norman Shaw.
Name had nothing to do with Queen Anne or the styles of her days
1702-1704.

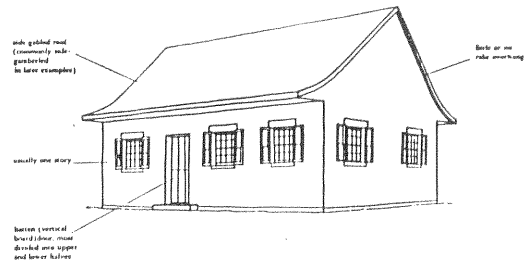
Type of Houses

1630-1920	Pre-railroad folk houses
1625-1840	Dutch Colonial
1700-1860	French Colonial
1600-1900	Spanish Colonial
1700-1830	Georgian Colonial
1780-1840	Adam Colonial, Federal
1770-1850	Early Classical Revival
1820-1880	Romantic house, Greek Revival, Gothic, Italianate, Octagon
1860-1900	Victorian House- Second Empire, Stick, Queen Anne, Shingle, Richardsonian, Romanesque, Folk Victorian
1890-1940	Tudor
1935-Present	Modern
1940-Present	Contemporary folk, Mobile homes, Dome houses, A-frames, Trailers

POST MEDIEVAL 1600-1700



DUTCH COLONIAL 1625



NORTHERN TRADITION

steep pitched roof, massive chimney



page 110

SOUTHERN TRADITION

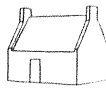
brick, usually one story and chimney



page 111

URBAN TRADITION

brick walls, steeply pitched, parapeted roof with paired end chimneys



page 112

RURAL TRADITION

stone walls, steeply pitched, rake or no overhang



page 113

RURAL TRADITION

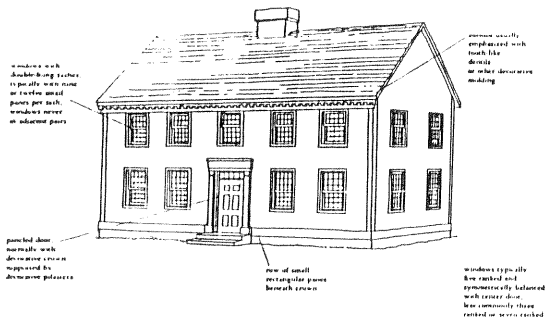
stone walls, steeply pitched, barrel vaulted, barrel vaulted, barrel vaulted



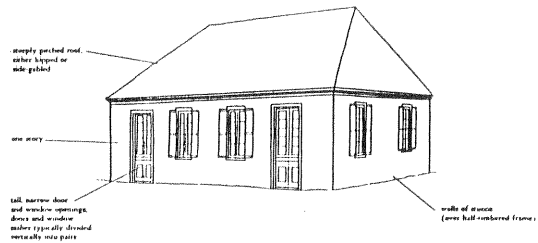
page 114

PREVIOUS SCREENS

GEORGIAN 1700-1780



BRITISH COLONIAL 1700-1880

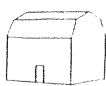


THE CAROLINIAN



page 116

CLARKSBURG



page 117

UPPER DENVER



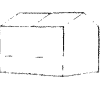
page 118

CENTSBURG



page 119

DOWN DENVER



page 120

URBAN TRADITION

side gabled roof (less commonly hipped with facing overhanging eaves, no porch)



page 121

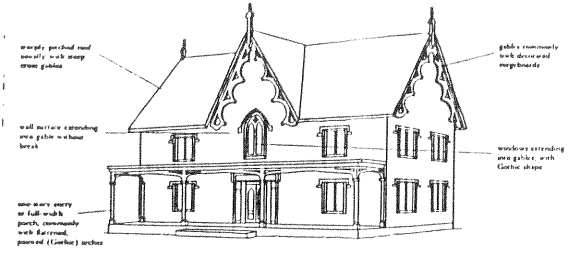
RURAL TRADITION

hipped (less commonly side gabled) with overhanging porch (usually on round foundation)

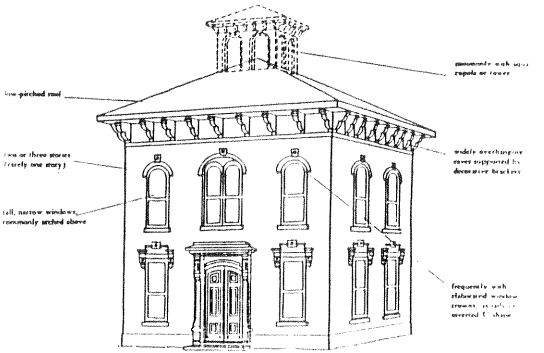
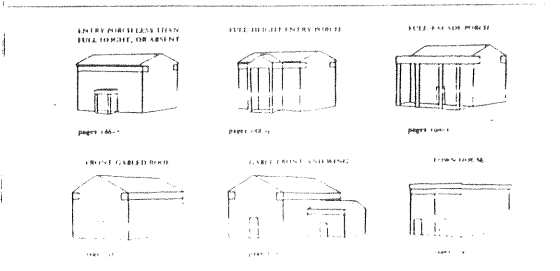
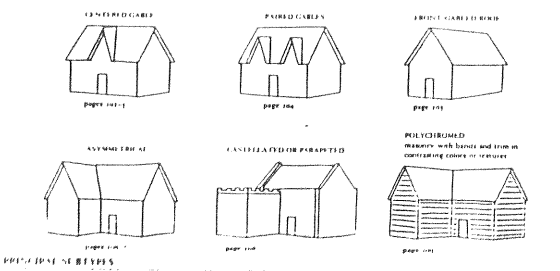


page 122

GOthic REVIVAL 1840-1880

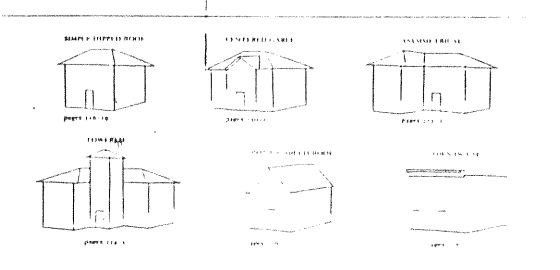
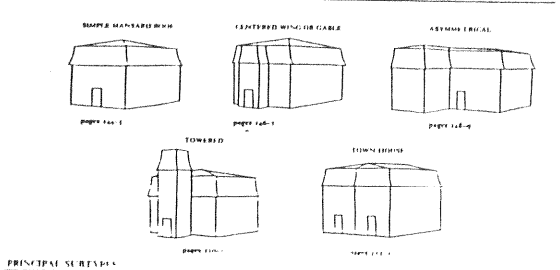


GREEK REVIVAL 1825-1860

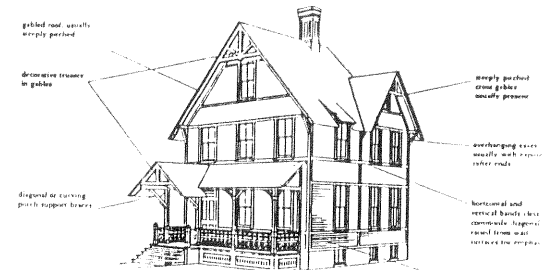


SECOND EMPIRE 1855-1885

ITALIANATE 1840-1885



STICK VICTORIAN 1860-1890



QUEBEC, N.S. 1880-1910

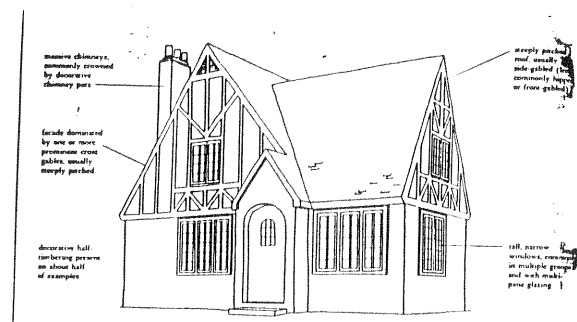
PRINCIPAL SUBTYPES

STEEP ROOF WITH GABLES (BUNGALOW)	SHARPLY GABLED ROOF	SHARPLY GABLED ROOF	SHARPLY GABLED ROOF
pages 160-1	page 174	page 175	page 184
pages 176-7	page 180	page 181	page 186
pages 187-1	pages 187-1	pages 187-1	pages 187-1
pages 191-2	pages 191-2	pages 191-2	pages 191-2

PRINCIPAL SUBTYPES

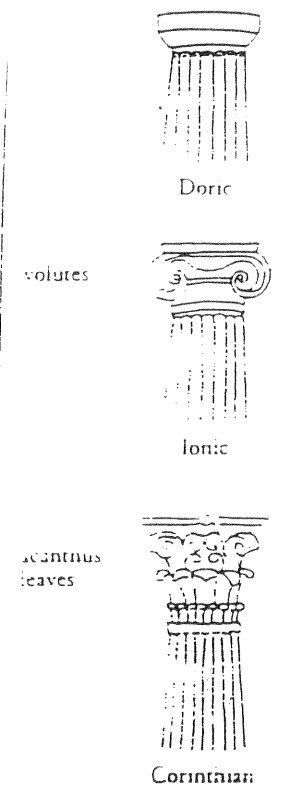
GABLED ROOF	SHARPLY GABLED ROOF
pages 187-9	page 191

TUDOR 1890-1940



PRINCIPAL SUBTYPES

STUCCO WALL FINISHING	BRICK WALL FINISHING	STONE WALL FINISHING	WOODEN WALL FINISHING
page 193	page 193	page 193	page 193
page 193	page 193	page 193	page 193



CLASSICAL CAPITALS